

From FoMRCH

Our website will be catching up with all these new developments as soon as possible

Thank you to those people who commented on our website

Julie - What an amazing website....

Brenda - I liked the pictures on the website. They really tell the story more effectively than words ever can.

John - It is superb - full of clear specific information.

Thank you to Gill Cole and David Jandrell who sent song books to MRCH when we asked for them.

Thank you to everyone who has donated or held fundraising events for the Children in Zimbabwe, their need is still so great. Please continue your marvellous support.

Cards

We have decided to print fewer Christmas cards this year as we suspect many people will not buy or send as many, so when the flyer comes to you in September please order early to avoid disappointment. There will still be some previous designs available.

Contacts

Chair: Carol Banham
carol2021@banham.net

Secretary: John Richer
jricher001@btinternet.com

Treasurer: Paddy Coles
22 Harraby Green
40 Wallace Road
Broadstone, Dorset
BH18 8NG
01202 699 062
padjen39@gmail.com

www.friendsofmatthewrusike.org

This newsletter is distributed by

The Friends of Matthew Rusike Children's Home.



Friends of Matthew Rusike Children's Home

Registered charity 1120944

June 2012

We give support, mainly by cash, but also by advice and assistance to the Home

NEWS FROM THE HOME

This month we have to report some fundamental changes at MRCH since our last newsletter.



The National Director for Childcare and Superintendent of MRCH will be leaving his post at the end of June. We, the Friends of MRCH, have enjoyed 11 years of cooperation for the benefit of the children of Zimbabwe as we have supported his inspired leadership and vision of growth.

"MRCH has enjoyed long term and regular support from international partners such as Friends of Matthew Rusike Children's Home in UK, Action for Children, MRDF-UK the Qantas Cabin Crew Team and Methodist Missionary Society – Northern Ireland.

Over the past ten years MRCH has developed from being an orphanage based in Epworth 15km outside Harare, to become one of the renowned national childcare agencies in the country. FoMRCH have supported us with shortfalls in education, provisions and medical costs, some establishment costs such as staff salaries and recurrent costs like electricity and water bills,

I am very grateful for the support I received from the FoMRCH during my tenure of office at MRCH.. Ever since my appointment, the FoMRCH has been my pillar of support financially, emotionally and technically."

Astonishment Mapurisa

There have been many positive developments both at the home and within many communities during his tenure of office and we hope and pray that progress for the benefit of over 7,000 children who come under the umbrella of the Matthew Rusike Organisation, will continue.

We look forward to an open and progressive relationship with his successor, Reverend Margaret Mawire.

MRCH staff Secondary Teachers



Gladys, the head, teaches Shona and RE

Kudakwashe, deputy, English,

Olga, history and geography,

Tawanda commerce, accounts and sports, **Major**, maths

Francis, integrated science and biology.

The study group was registered in the 1980s as a community resource to help secondary age children with their homework. In 2007 it was decided to try to formalise it into a small secondary school for children from the community aged 13-16, whose families can't afford to pay the full fees of secondary education. In 2009 6 qualified teachers (with degrees and some studying for masters degrees) joined the staff at MRCH. The vision for the future is to transform it into a school where more subjects would be available

2

and it could become an official examination centre for O and A level exams.

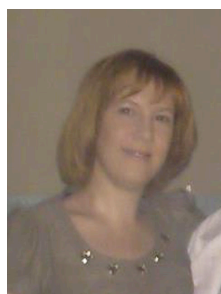
This is unfortunately a long way in the future because of the poor quality of the buildings, furniture and lack of educational equipment. Just to be able to apply for school status the building would have to be refurbished and all windows fixed, new and up graded toilets available. Every child needs a chair and a decent table to work on.

Over 350 young people are registered and their fees are expected to pay for the staff salaries. They are taught in 3 poor quality classrooms, a large echoing hall or outside in the shade. There are 45-50 children per class in two sittings spread over 8am – 4pm. There are not enough chairs for each child to have one and the few they have are shared with the tailoring group at the other end of the site.



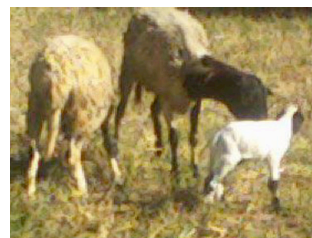
After a short time in South Africa Shelley returned to the UK to take up a post in Doncaster.

"I trust this is a 'pause' in my time



of service to the people of Zimbabwe, not an ending, as the Methodist Church of Zimbabwe is very keen to continue in the partnership with

Methodist Church Great Britain. I have continued to support MRCH from afar through emails and phone calls – coordinating how to use money that has been donated specifically to develop the Early Childhood Development centre (ECD). We are currently building a goat and sheep paddock for our increasing herd. The ECD kitchen has been fitted with a stove, fridge, a microwave and baking equipment for days when we have electricity.



"The first lamb of our ECD animal project was

welcomed in May along with chicks and a litter of 4 rabbits. These will improve the children's diet and reduce the burden of the cost of food for MRCH. Children

7 are also learning animal husbandry skills.

As you can imagine this has been a whirlwind of emotion, uncertainty and loss during which time God has sent me many 'angels' along the way in many forms...some of whom will be reading this! People to talk to me; to pray with; a 5 year old to do regular makeovers for me; people to challenge my thinking; to teach me; to laugh with; cry with and even a cat to sit with me during my nights of searching my soul for solutions! All the while I hang onto my 2 favourite verses that both inspire and comfort me:-"

"For I know the plans I have for you," declares the Lord, "plans to prosper you and not harm you, plans to give you hope and a future. Then you will call upon me and come and pray to me and I will listen to you"

Jeremiah 29 v 11

"And whoever welcomes a little child like this in my name welcomes me."

Matthew 18 v 6

"Please pray for the children and staff at MRCH. Please pray that God will guide me in my next steps back in the UK and make clear a way for my continued involvement with MRCH in Zimbabwe." **Shelley Cooling**