

Can I seek your help in trying to raise funds either individually or through your church, and do whatever you can to turn around the situation so we can continue to support the Home.

Lastly I intend to make this my last year as treasurer, after some 16 years in the job. We would be delighted to hear from anyone who feels they could take on this task. *Paddy Coles Treasurer*

We shall greatly miss Paddy and we thank him for all his work and dedication as FoMRCH treasurer and for his work setting us up as a registered charity. If you have talents in this direction please read his job description and contact him. *Ed*

Being treasurer entails receiving and banking donations and making payments mainly by Mail Transfer to the Home's bank account in Zimbabwe; produce Income and Expenditure Accounts annually and submit these to the Charity Commissioners; keep the Charity Commission up to date with any changes to the Trustees; encourage regular donors to set up a Banker's Order.

Executive Committee member

We are also losing another of our valued founder members from the executive committee. John Bromley instigated our inaugural meeting and with his wife Mary has visited the home many times. They have both been staunch supporters of the work at MRCH since their first visit in the early 90s.

Thanks to Leigh East we have recently up dated our website with many more photos (and descriptive captions) to download for fundraising purposes. There is a list of projects at MRCH for 2013; and descriptions of what your executive committee does for this charity. We would like to include more news about your fundraising events. Please send the Chairman any stories and pictures you may have

www.friendsofmatthewrusike.org

AGM

This year the AGM is on Saturday March 23rd at Droitwich Methodist Church. Everyone will be made very welcome to join us for the Bring and Share lunch after the meeting. Details in the included letter.

Contacts

Chair: Carol Banham
carol2021@banham.net

Secretary: John Richer
jricher001@btinternet.com

Treasurer: Paddy Coles
22 HarraybyGreen
40 Wallace Road
Broadstone, Dorset
BH18 8NG
01202 699 062
padjen39@gmail.com

This newsletter is distributed by
**The Friends of Matthew Rusike
Children's Home.**



Friends of Matthew Rusike Children's Home

Registered charity 1120944

We give mainly financial support and advice to the Home

March 2013

NEWS FROM THE HOME

"So much is going on here, at MRCH we are doing well. With support which has been guided by Shelley and we receive through the friends, we managed to put window pens at the ECD and now we have 3 more sheep and goats. We now have countless chickens and the children's diet has significantly improved as a result of this project started by Shelley.

The children are well except for three who concern us. One has a deteriorating chronic condition, another has been diagnosed with epilepsy and another is seeing a psychologist because his behaviour has been erratic.

This year, with the welcome support of the Zimbabwe Revenue Authority, we plan to renew the piggery project because it's a very viable income generating business. We are also building Blair toilets (pit latrines) for the college as I am sure you are aware of the erratic water situation here. We already have cement and now the rain has stopped we can start construction. Gladys (college head) and her team work very hard and enrolment has increased significantly in the college.

The two greenhouses have been recovered with support from Uniting World and now we are able to sell vegetables to local supermarkets.

Support from FoMRCH remains vital. The last money arrived just in time to pay for the school fees of those that are not under

Susy's sponsorship programme including those in university. 62 children's education is paid for under this Qantas Cabin Crew scheme. Currently we have four children in university, only one is sponsored and the Home meets the fees of three of them.

Some of the money paid electricity and water bills, the rest of the money went to staff salaries. (*salaries can sometimes be months in arrears. ed*)

As a result of a mini crisis we had to buy complete uniforms for the children. For the better part of December, MRCH had no electricity because of a fault and in January when we came back from holiday, our tailoress handed in her immediate resignation without notice. So we were left with a problem because the children had to be in school. However, I'm happy to say that we have a new staff member at the tailoring workshop, who started work on the 4th of February."

Rev Margaret Mawire

Action for Children

I'm very pleased to report that it has been possible for Margaret to negotiate with the School of Social Work at the University in Harare for in service training to staff. A programme leading to qualifications from the university will be commenced this year. Action for Children has provided the funding for this year and will look to continue the support for professional child care training into next year.

Rev Will Morrey

Meet the Staff in the last of the interviews from our visit in 2011

Leeta is the nurse who cares for children and staff when they're ill. The clinic is now officially registered and awaits the government inspector so she can claim more free medication. There are 5 rooms: a consultation room, a young child observation room with 2 beds, a room with 5 adult beds, a drugs room and 2 tiled bathrooms.

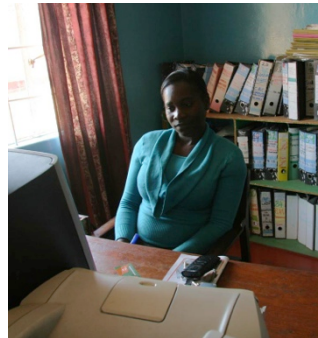


Leeta needs more basic medications, disinfectant, antiseptic creams and first aid items and she would like the floors tiled so it is even more hygienic. There are 11 HIV children living at the home who she was happy to say are all well at the moment, but very many of the community children in the outreach projects are also HIV positive. Leeta visits the outreach projects across the country to give help and support to the volunteer carers.

Zvirinane, Rev Mawire's PA. She deals with all information and documentation to do with the children, the staff and the activities of MRCH in general and provides interim and annual reports on all the outreach projects. She produces the MRCH newsletter and information packs as required and deals with all

correspondence by phone, letter or email. Without electricity her hands are tied.

She works with Rairo for the needs of any visitors, with Margaret to organise her itinerary and that of visitors, with staff to arrange any events taking place at the home



"I love what I do. We look for funds for programming purposes and maintain partnerships locally and internationally to ensure that programming continues. Everything we receive at the Home is useful in one way or the other. Some people give cash but most give in kind. We really need the cash to cater for operational costs at the Home. As a Home we also develop our local fundraising initiatives for example through activities such as the annual business dinner dance in Harare to complement what we receive from outside."

Jullius is the storesman, keeper of the keys and maintenance man. He receives, records and stores all food, toiletries, house cleaning materials, crockery, cutlery, stationery, clothing and all donations in kind. Staff must fill in a requisition form for anything they need. He also reorders items, getting quotations before he buys

and conducts a monthly and an annual stock take.

Jullius is also the maintenance man,



making sure that all the doors and locks are working well on the storerooms. "I also do a little bit of electricity, iron work and repairing". His wish list is for more shelving in his storerooms so he can organise everything better but there is never enough money for such materials.



I also discovered that his hands are the MRCH standard for 'weighing' the vegetables in the garden. Customers thrust bunches of greens into his hands until he can't hold any more and that amount is worth US\$1. Here he and Able are selling greens to local women.

Joseph is in charge of a team of 6 local police officers based at MRCH and Chitungwiza. There is a good relationship with the local police station. Joseph regularly checks all safety catches on doors and windows are working

correctly, that all doors are locked at night and often returns to the site after his shift to check the perimeter again. Community people's bags and vehicles are all searched as they leave the site.



Jullius and Joseph

Treasurer's report

Many thanks to all who have supported us during the year by raising funds and by regular donations. After a record year in 2011, it was no doubt to be expected that 2012 was unlikely to be so good; and so it turned out. However, it was worse than I expected. Our overall income was down from £78,675 to £52,532. We received tax refunds for two years in 2012 and none in 2011, so in fact the level of donations virtually halved. It was not all negative as our regular bankers order income has increased to around £850 per month. I want to maintain our regular remittance to MRCH at U.S.\$6,000 per month (approx £4,000). However this may mean drawing on our reserves again, which were reduced by approximately £9,000 last year. Hopefully our fundraising and donations will improve this year, although to date there is little sign of this. (See included accounts sheet)